

ATB-300 Digital/Analog Audio Switcher



Up to 8 Channel Audio Switcher/DA



The ATB-300 Series Audio Switcher/DA products are a versatile way to manage AES3 and/or analog audio in one package. With over 10 models to choose from the ATB-300 series make audio switching and distribution over different platforms easy. These products also feature automatic operation with silence detection which is programmable. User defined level threshold, time delay and auto revert time are available from the simple front panel setup menu. The ATB series can be operated from the front panel, GPIO or from an Ethernet connection using **SNMP** and/or the **BDI Stack** Graphical User Interface available for Windows and Android devices. The GUI also provides a means of naming inputs and outputs for convenience.



- Up to 8 I/O Analog, AES3 or a 4 of Each
- Composite FM Stereo I/O module — 4 Composite Output DA and Composite to AES3 Conversion
- Programmable Silence detection including threshold, time delay, auto revert time
- Programmable Silence Switching channel priority. Custom programmable sequence of channels
- Sample Rate Conversion on every AES3 input
- Synchronous AES3 switching for silent, glitch free switching
- 24 bit resolution throughout
- Tascam™ Standard Interface
- Ethernet connection for use with **SNMPv2** and/or BDI **Stack** GUI
- RS232/485 Compatible for use with most automation systems

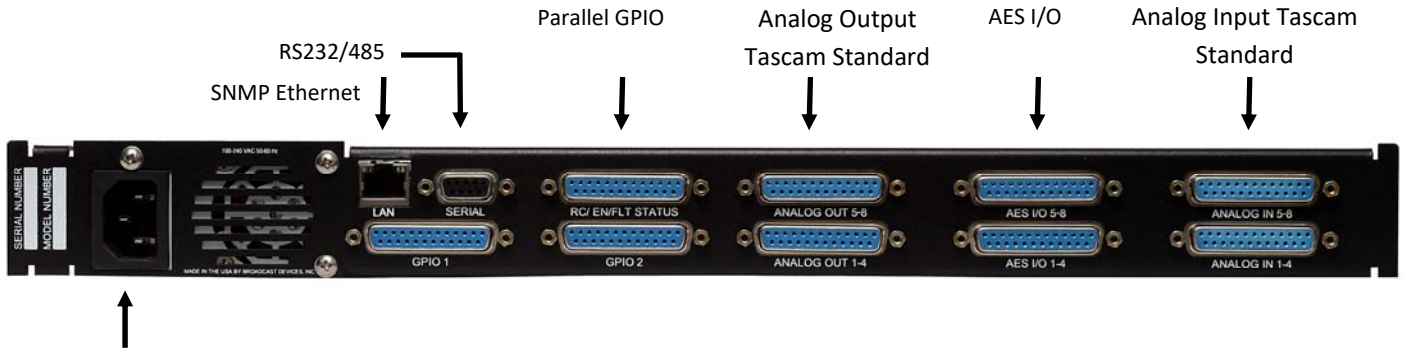
Technical Specifications

I/O Types Available:	AES3 8-96 KHz , Analog balanced +4 dBm, Composite FM Stereo Base band
Number of I/O	Up to 8—Model Specific—See Model Chart below
Sample Rate Converted AES3 Output Sample Rates:	32, 44.1 or 48 KHz—User Definable
Analog Inputs:	+4 dBm Balanced L/R +24 dBm Max. input level
Analog Outputs:	+ 4 dBm Balanced L/R + 18 dBm Max output level
Frequency Response:*	+/- 0.25 dB from 20 Hertz to 20 KHz
Total Harmonic Distortion:*	Less than 0.05% at headroom level
Dynamic Range:	90 dB or greater
Remote Control:	Parallel GPIO, Ethernet SNMPv2 and RS-232/485 Serial
Power Requirements:	100-240 VAC 50-60 Hertz @0.5A
Environmental:	0-60 degrees C. Non Condensing Atmosphere
Mechanical:	19" X 10" D X 1.75" H—Standard 1 RU EIA Rack enclosure
Shipping Weight/Dimensions including Carton :	15 lbs., 22" LX 14" W X 7" H

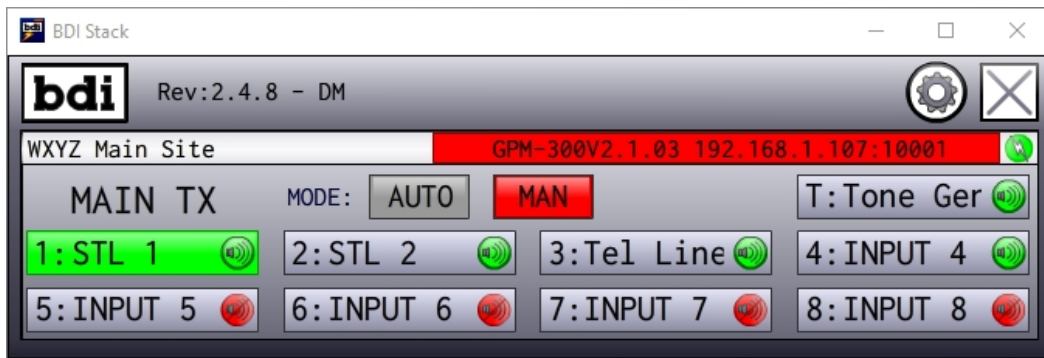
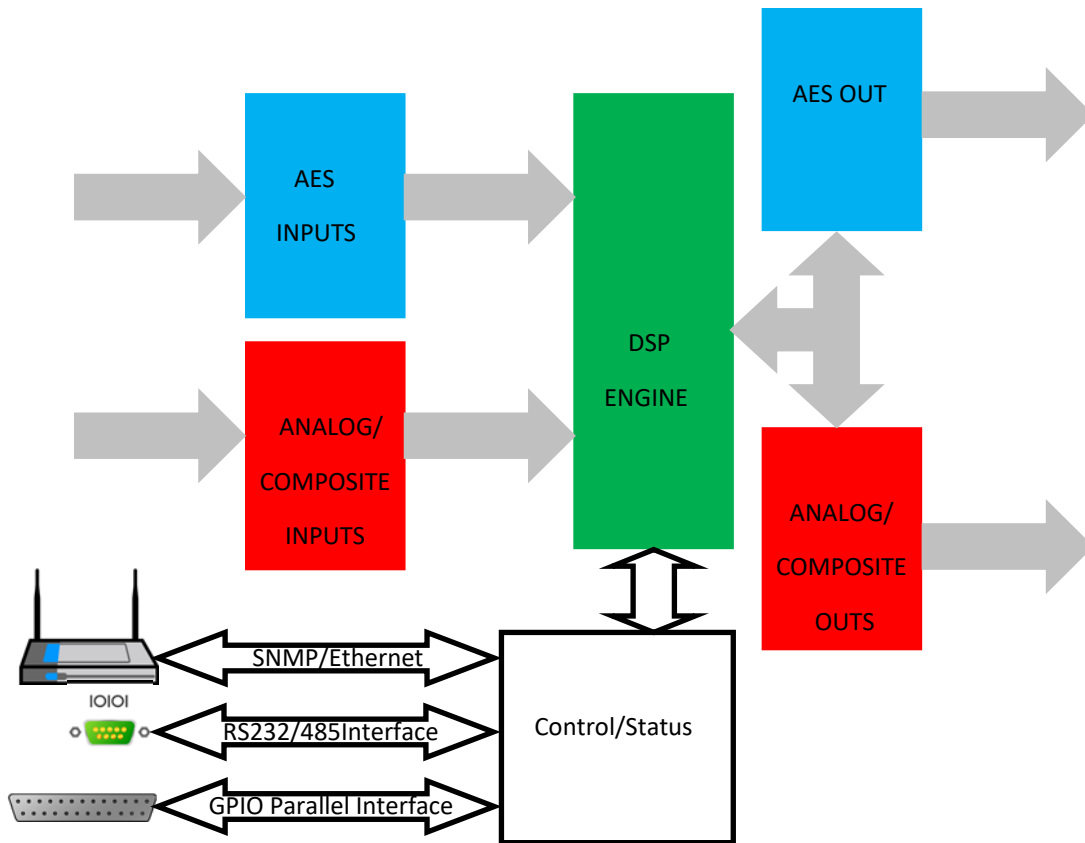
Model Chart	AES3 I/O	Analog Input	Analog Output	Composite Base Band I/O
ATB-300-1	4	0	0	0
ATB-300-2	4	4	0	0
ATB-300-3	4	0	4	0
ATB-300-4	0	4	4	0
ATB-300-5	4	4	4	0
ATB-300-6	8	0	0	0
ATB-300-7	0	8	4	0
ATB-300-8	0	8	8	0
ATB-300-9*	4	0	0	4
ATB-300-10*	0	4	4	4

*Note ATB-300-9,10 versions can be configured to convert composite base band to AES3 stereo outputs

Basic Block Diagram



100-240 VAC 50-60 Hertz



BDI Stack Graphical User Interface